

Better Together

www.integratedcare.nswlhd.health.nsw.gov.au

NNSW INTEGRATED CARE MADE POSSIBLE BY STRONG LOCAL PARTNERSHIPS:



Patient Story

Presented by Sandy O'Brien

Integrated Care
Mental Health and Drug & Alcohol
NNSWLHD

www.integratedcare.nswlhd.health.nsw.gov.au

NNSW INTEGRATED CARE MADE POSSIBLE BY STRONG LOCAL PARTNERSHIPS:



Thank You

www.integratedcare.nswlhd.health.nsw.gov.au

NNSW INTEGRATED CARE MADE POSSIBLE BY STRONG LOCAL PARTNERSHIPS:



Admission and Discharge Notifications (ADNs)

Presented by Timothy Marsh
Senior IT Coordinator, Integrated Care
NNSWLHD

www.integratedcare.nswlhd.health.nsw.gov.au

NNSW INTEGRATED CARE MADE POSSIBLE BY STRONG LOCAL PARTNERSHIPS:





The Solution

MedicalDirector Clinical 3.16 - [Holding File]

File Edit Patient Action Window Help

Preview - Bottom ▾ Hide Preview Clear Filters Move Location Document Details Scan ▾ Import ▾ Print ▾ Print List ▾ Delete Refresh

Name: CDMP, Test4 Address: 147 Laurel Ave LISMORE. 2480 D.O.B.: 06/05/1945 Gender: M Medicare No: 20154609712 IHI No: Lab. Reference: 1459396597526 Date Requested: / /	Subject: NOTIFICATION FOR GP Lab. Reference: 1459396597526 Requested: Complete: Final Performed: 31/03/2016 Sender/Provider: 8003624900018984
--	---

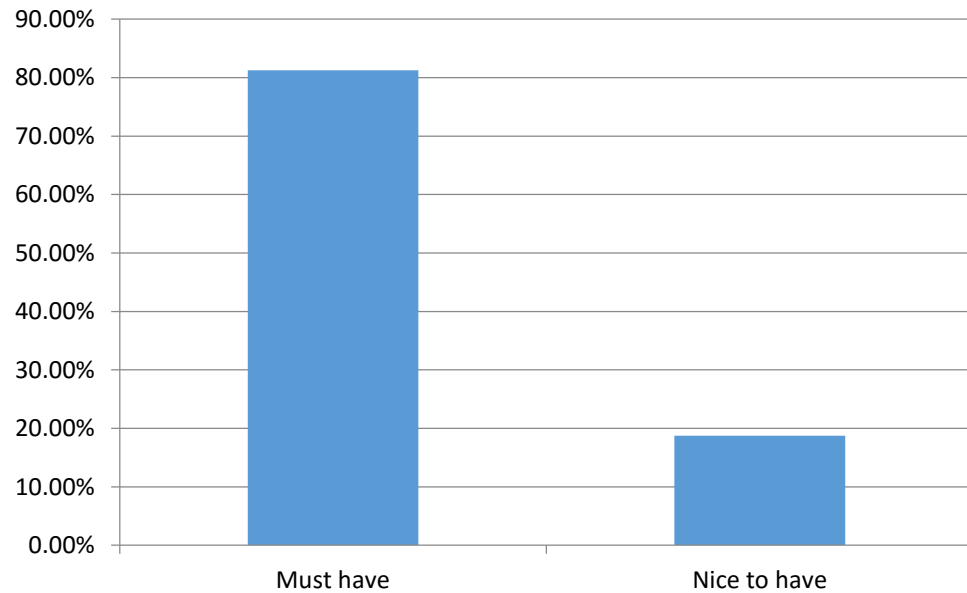
Admission Notification

Dear Dr. MOfest please note that your patient
Name: Test4 CDMP
DOB: 06/05/1945
Sex: M
MRN: 783224
Medicare No: 20154609712
Address: 147 Laurel Ave, LISMORE, NSW 2480 Australia

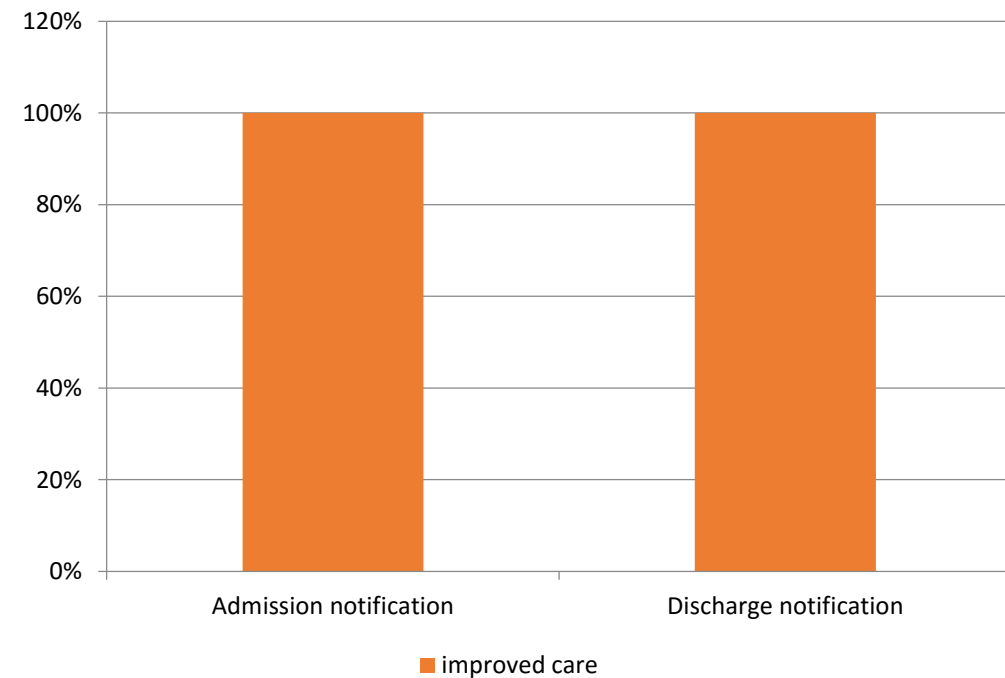
Has been admitted to LISMORE Admission date: 31/03/2016
Reason for admission: testing MO2 Attending Dr. Stephen Moore

GP feedback

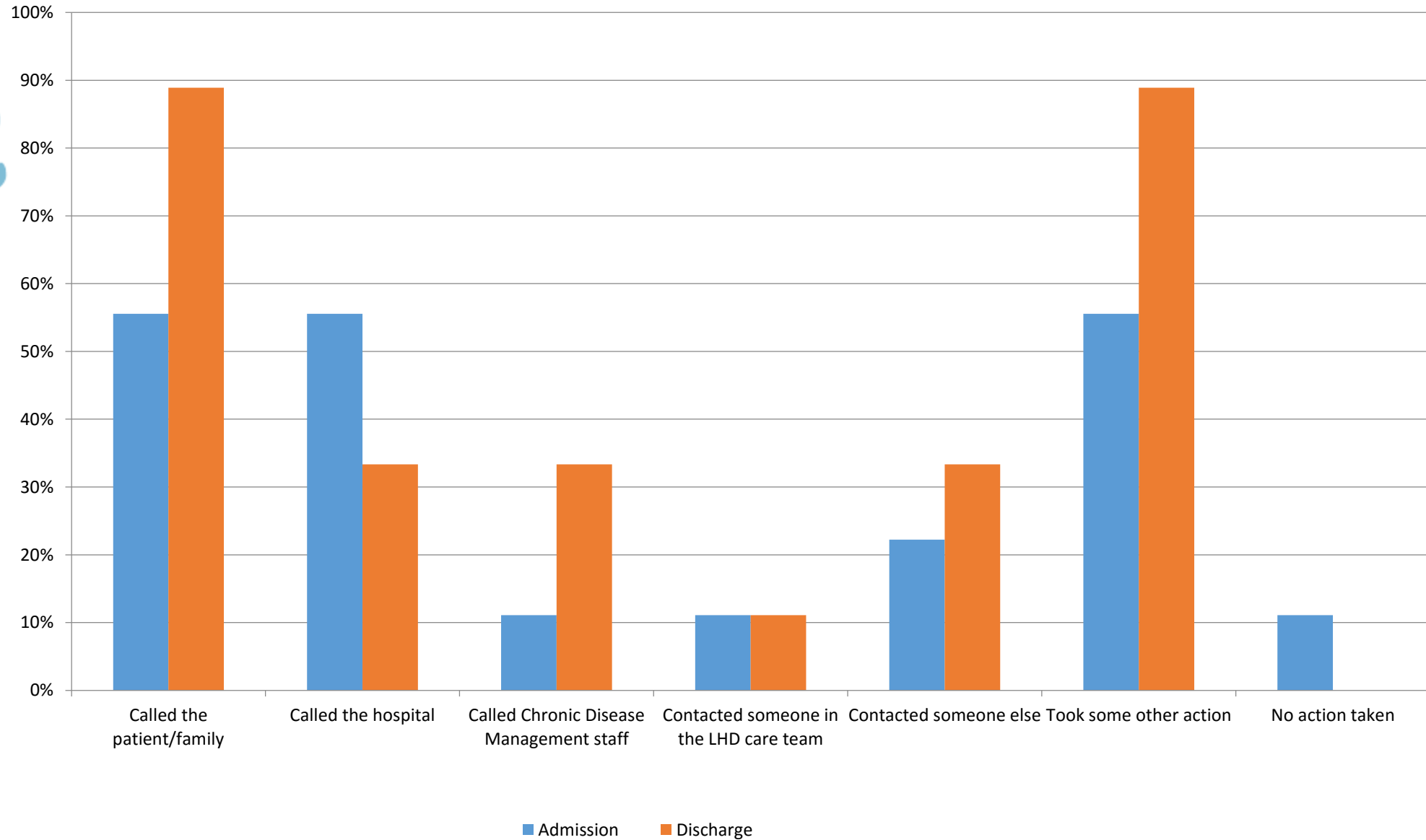
The Importance of ADNs



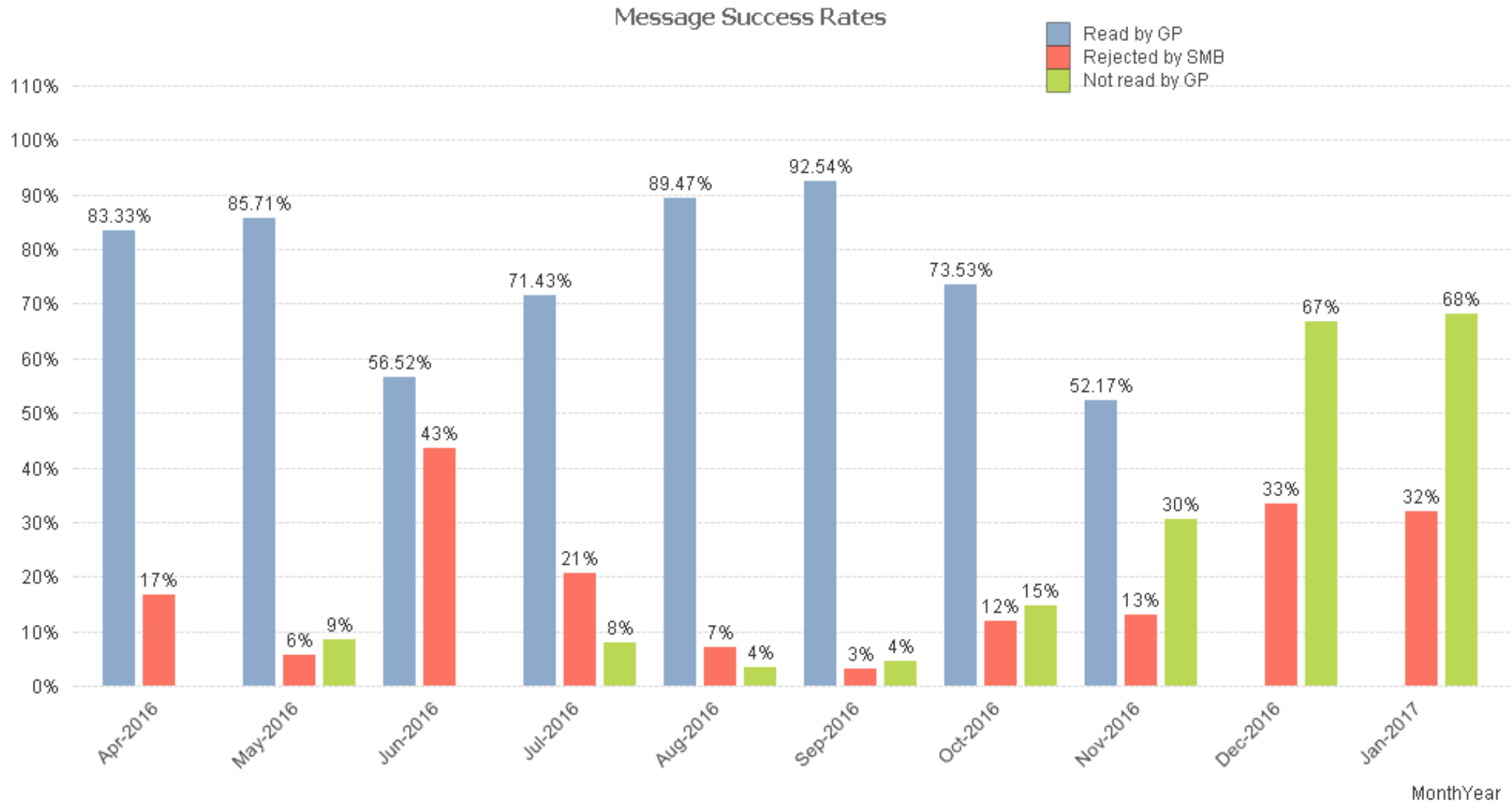
How ADNS have impacted IC



Changes to behaviour



Quantitative



Cost: \$69 April '16 to Jan '17

Importance, what's next?

- Version 2 currently being tested: more patients (from 200 to potentially ~1000+), more scalable, more reliable
- Operationalise GP reach-in to hospital
- Improved clinician experience, patient care/quality
- Built trust/credibility
- Innovative, statewide applicability + framework – Southern LHD and Nepean/Blue Mtns has asked eHealth to help build these



EMR Connect

Presented by Dr Chris Mitchell
General Practitioner

www.integratedcare.nswlhd.health.nsw.gov.au

NNSW INTEGRATED CARE MADE POSSIBLE BY STRONG LOCAL PARTNERSHIPS:





Discharge Summary Improvements

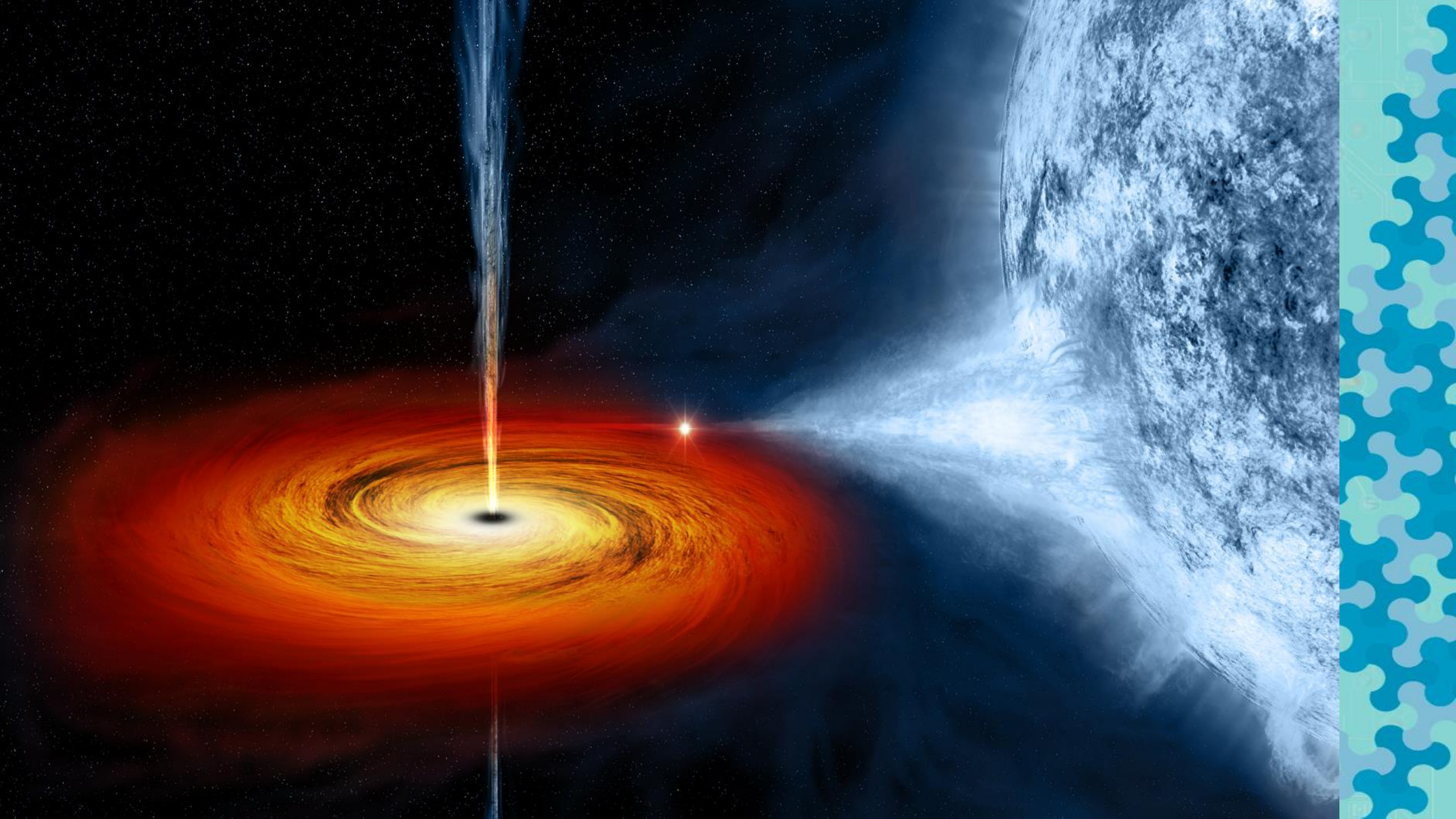
Presented by Timothy Marsh
Senior IT Coordinator, Integrated Care, NNSWLHD

& Katherine Willis Sullivan
Director Medical Services, Richmond Network, NNSWLHD

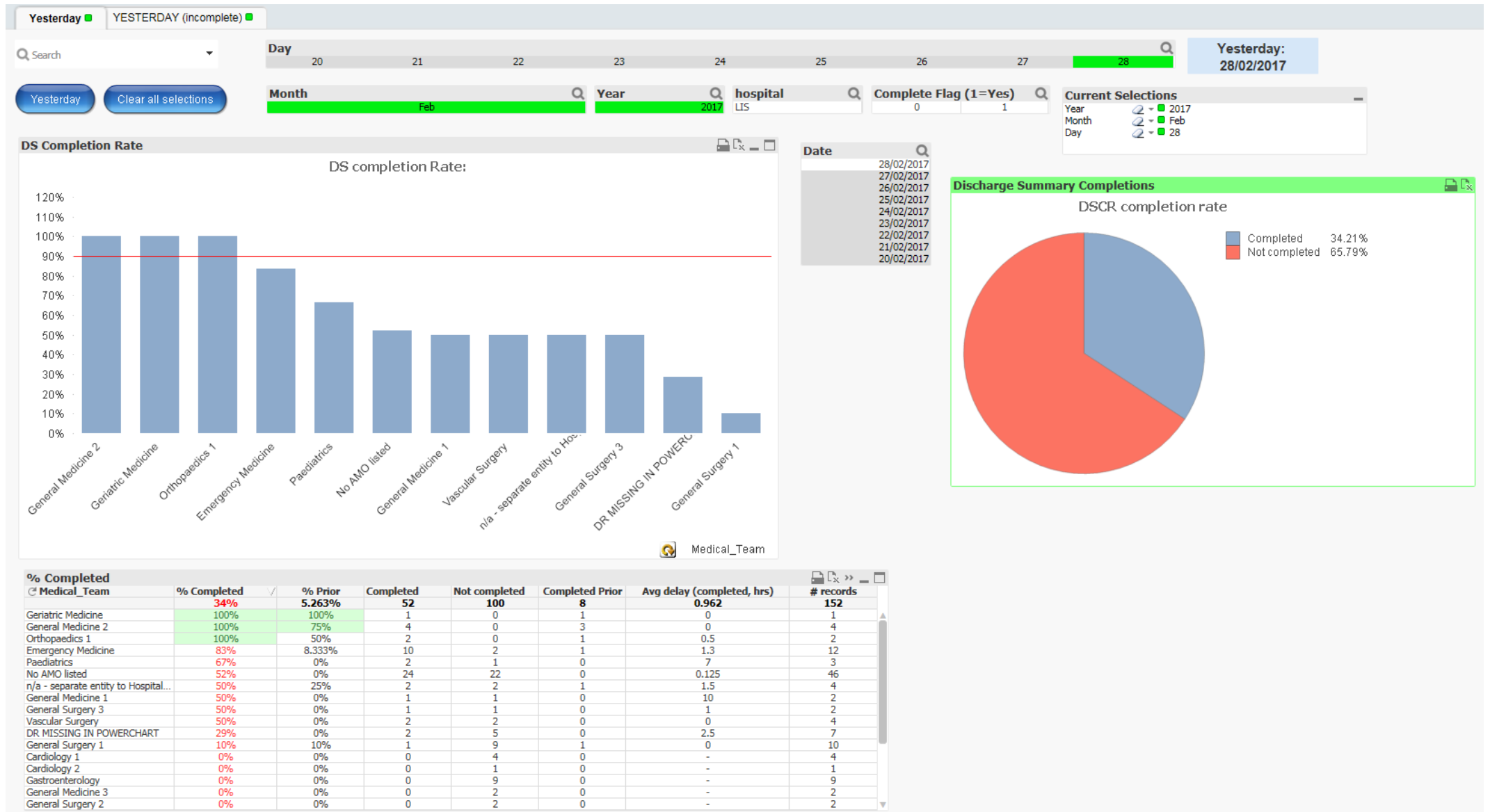
www.integratedcare.nswlhd.health.nsw.gov.au

NNSW INTEGRATED CARE MADE POSSIBLE BY STRONG LOCAL PARTNERSHIPS:

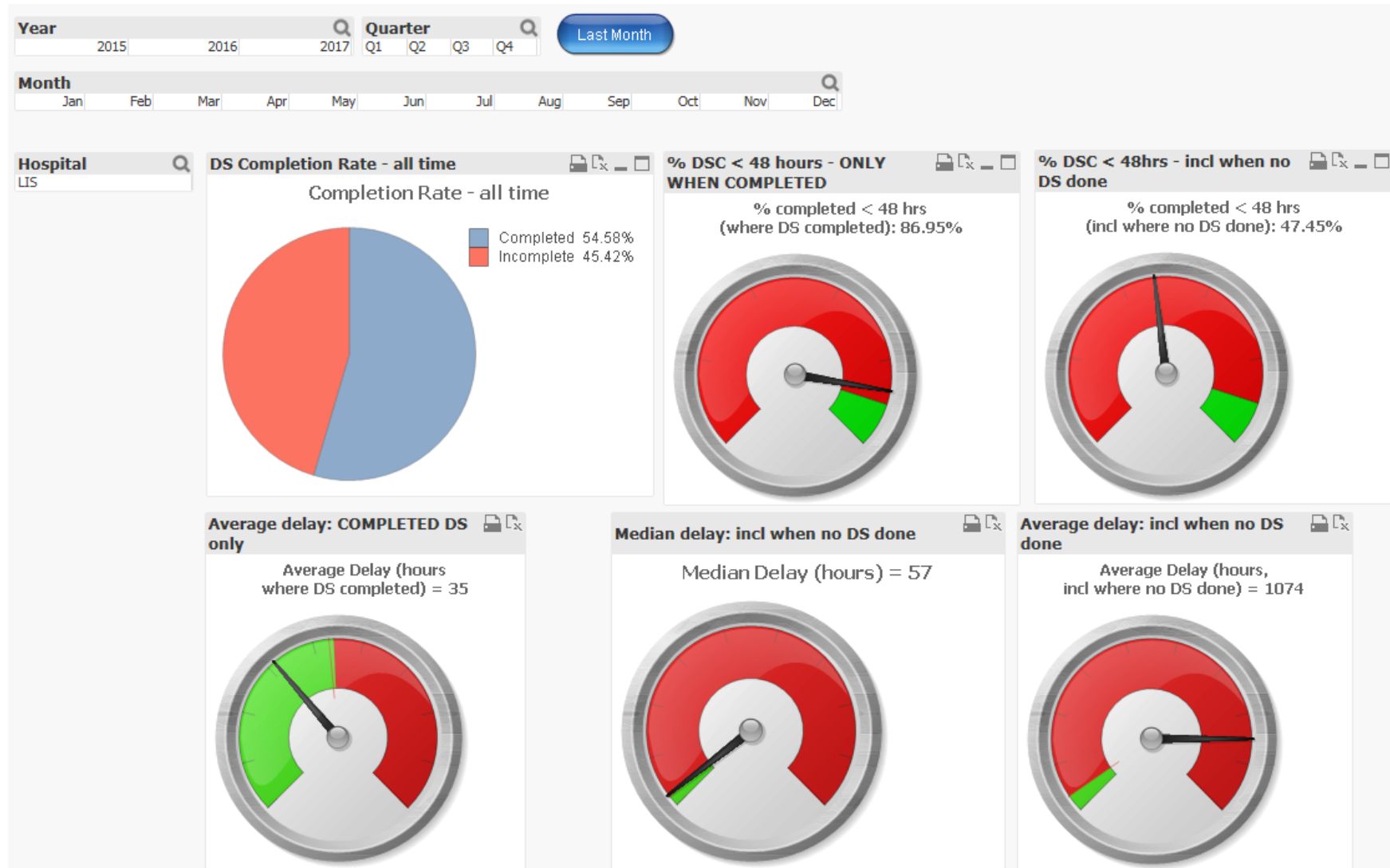




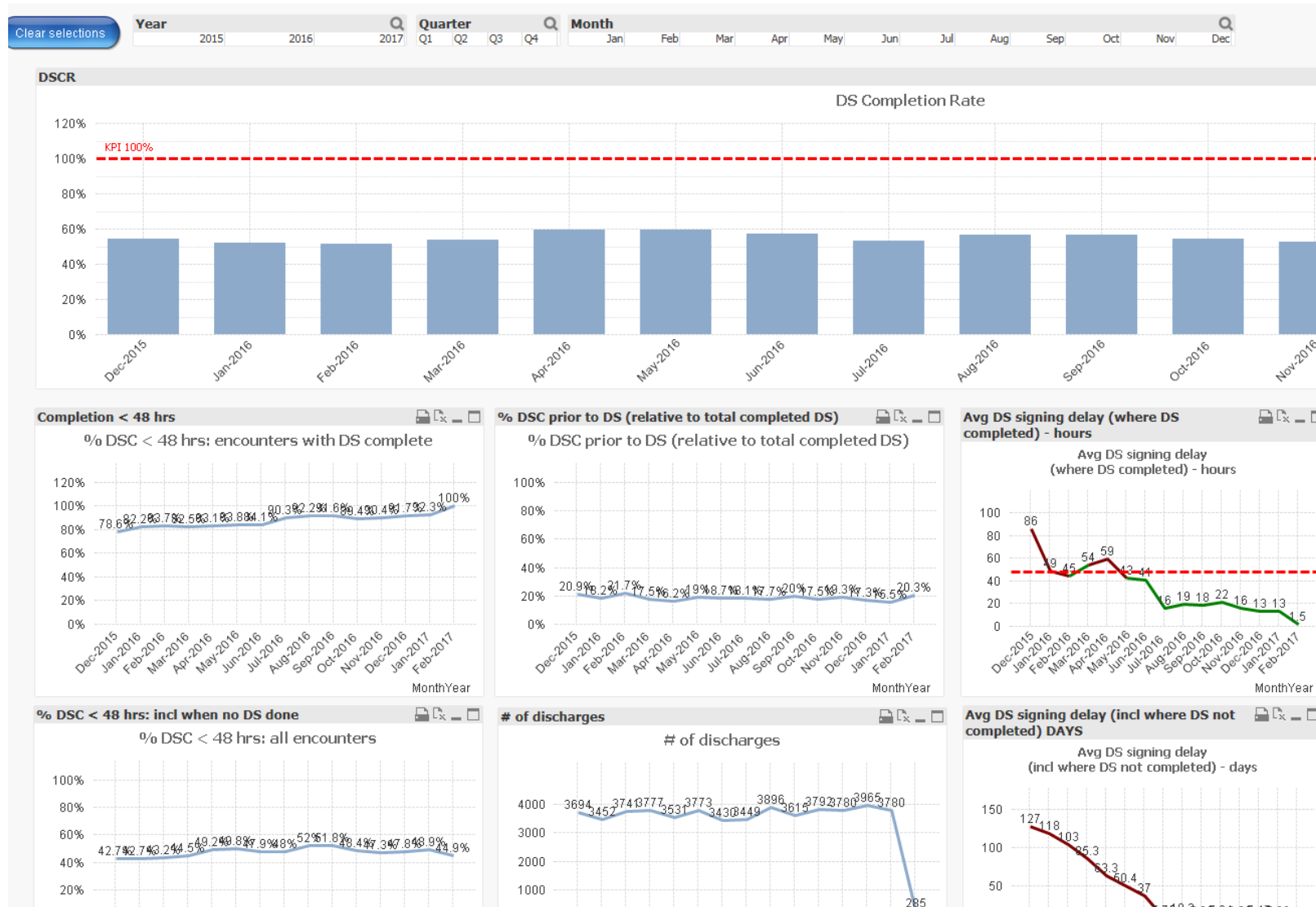
Daily Discharge Summary Dashboard



Monthly KPI Dashboard



Monthly Trends





- Monitor medical team workflows
- Redeploy staff
- Provide feedback to JMOs in real time
- Assist JMOs develop time management skills
- Data cleanse
- Better engagement with JMOs in order to understand and resolve issues
- Forward plan – understand clinical demands and create better roster patterns





Next Challenge – Content

- Discharge Diagnosis: “General Body Deterioration”
- Discharge Diagnosis: “Risk of fluid excess”
- Discharge Diagnosis: “Under the care of a General Surgeon”

Thank You

www.integratedcare.nswlhd.health.nsw.gov.au

NNSW INTEGRATED CARE MADE POSSIBLE BY STRONG LOCAL PARTNERSHIPS:



Better Together

www.integratedcare.nswlhd.health.nsw.gov.au

NNSW INTEGRATED CARE MADE POSSIBLE BY STRONG LOCAL PARTNERSHIPS:

